



Z180.720===

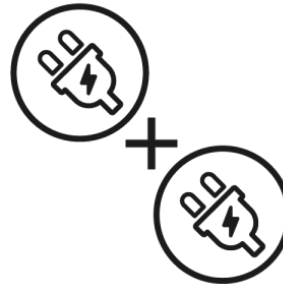
## Accessories

DE180.721===



Configuration kit for electric accessory

DE180.722



Configuration kit for electric + electric accessory

B018.740-1



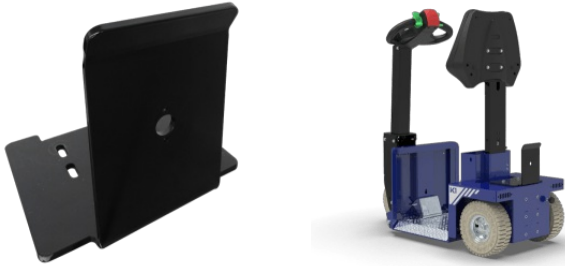
AGM battery pack - 37/45Ah

B151.740===



LITHIUM battery pack - 40Ah

Z524.712



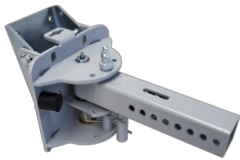
Fitting kit for battery pack 30Ah, 45Ah and Lithium

ZG20.029.721===



Height adjustable plate electric controlled

ZG60.021.700===



Pivoting support arm for hitches

ZG20.020.720===



Adjustable hitch for Roll box

ZG20.032.722===



Electric clamp hitch

Z526.721===



Ballasts kit 58 kg

Z526.722===



Ballasts kit 80 kg

Z526.724===



Ballasts kit 122 kg

Z180.719===



Basket

Z180.752===



Pole mounted flashing beacon

E550.750===



Emergency stop

E506.750===



Key Pad on/off

E204.700===



Digital hour meter

E800.705===



Front and rear lights kit

E800.704===



Steering speed reduction kit

ZG60.003.720===



Ball/pin hitch Ø20-25

ZG30.013.720===



Mounting plate for hitches

ZG00.000.806



Extension for hitches

A199.705



Drop pin hitch Ø16 mm

ZG40.005.700===



Drop pin hitch Ø20 mm